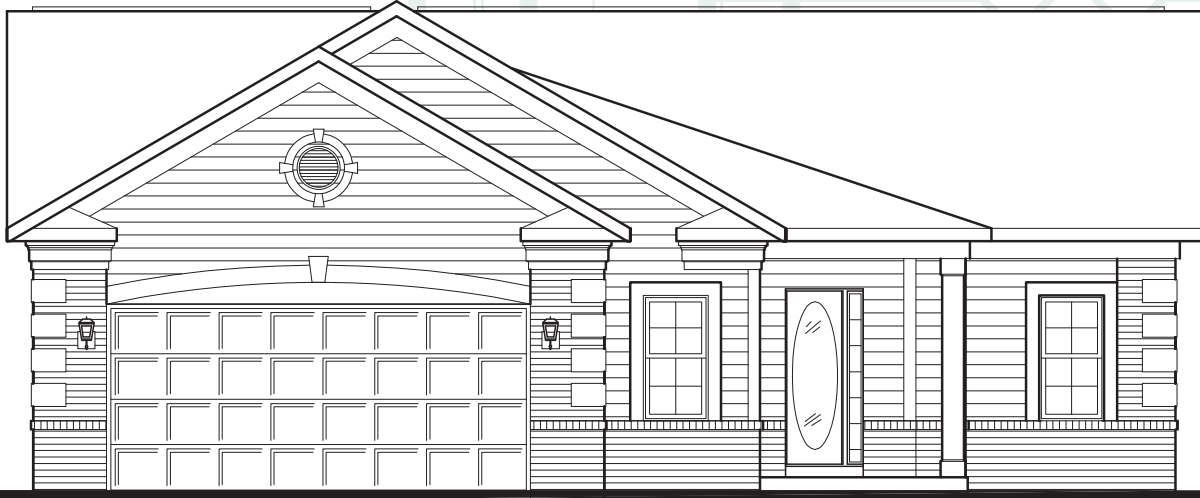
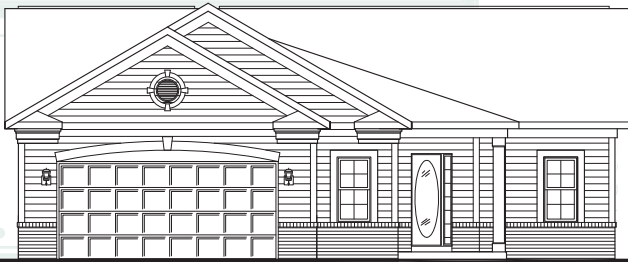


The
Chateau
1,565 sq. ft.



Elevation "B"

Copyright © 2009 Parkview Homes, All Rights Reserved.



Elevation "A"

Copyright © 2009 Parkview Homes, All Rights Reserved.



Elevation "C"

Copyright © 2009 Parkview Homes, All Rights Reserved.

Monticello
at HIGH POINT



PARKVIEW HOMES

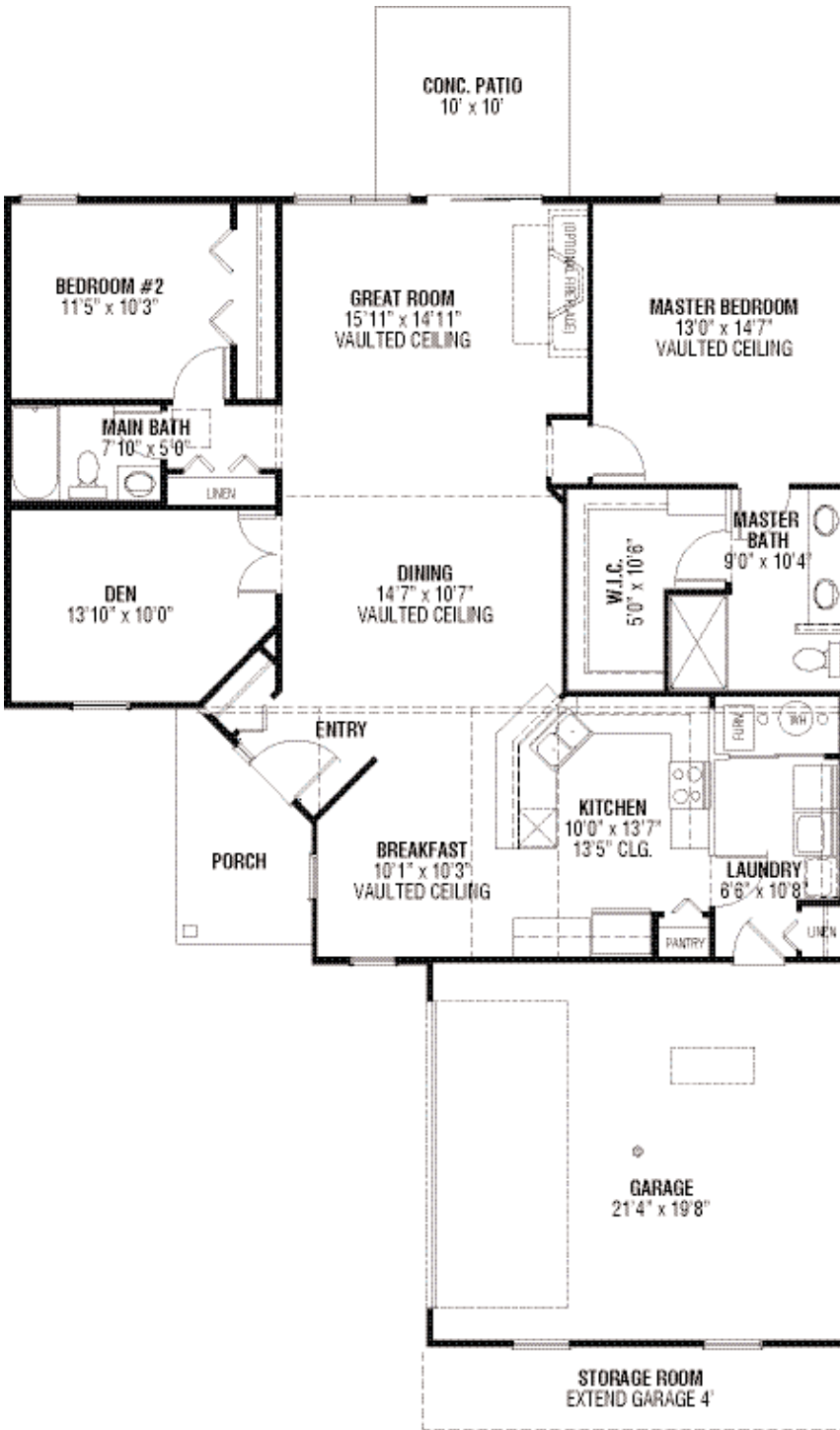
"A Family Tradition For More Than 80 Years"

The CHATEAU

BASE PRICE _____

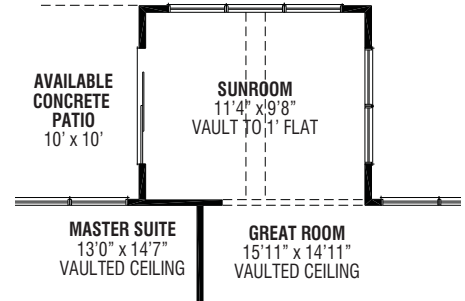
SQ. FT. 1,565

Floor Plans and Square Footage Vary by Elevation

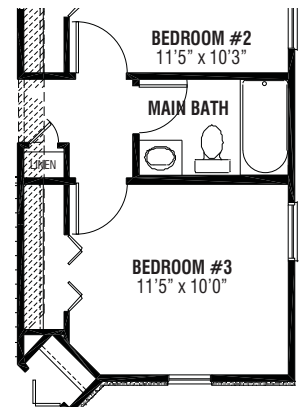


Available Sunroom

*adds 10' to depth of house

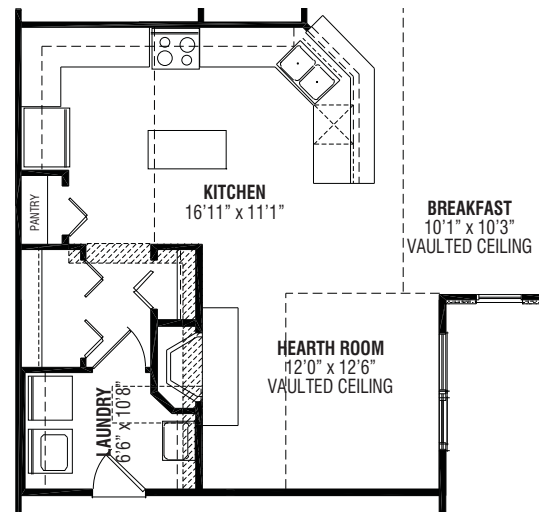


Available Bedroom #3



Available Kitchen and Hearth Room

*adds 10' to depth of house



"A Family Tradition For More Than 80 Years"

13370 Prospect Road • Strongsville, OH 44149 • (440) 238-9440 • www.ParkviewHomes.com

Parkview Homes is committed to the constant improvement of our products. To insure that your new Parkview home is of the highest quality, we reserve the right to make product substitutions of equal or higher quality, and changes to brand names, dimensions and architectural details. This brochure is for illustrative purposes only and not part of a legal contract. Prices and specifications subject to change without notice. All square footage calculations are under roof. © Copyright 2014 Parkview Homes, All Rights Reserved. 10/18/14