

**The Montclair**  
2,238 sq.ft.

BEDROOM #3  
14'-1" x 11'-4"

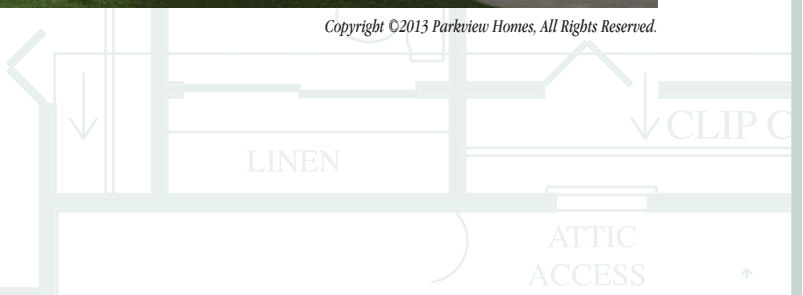
*The Craftsman Series*  
at

*Siedel's Landing*



Elevation "E"

Copyright ©2013 Parkview Homes, All Rights Reserved.



# The MONTCLAIR

BASE PRICE \_\_\_\_\_

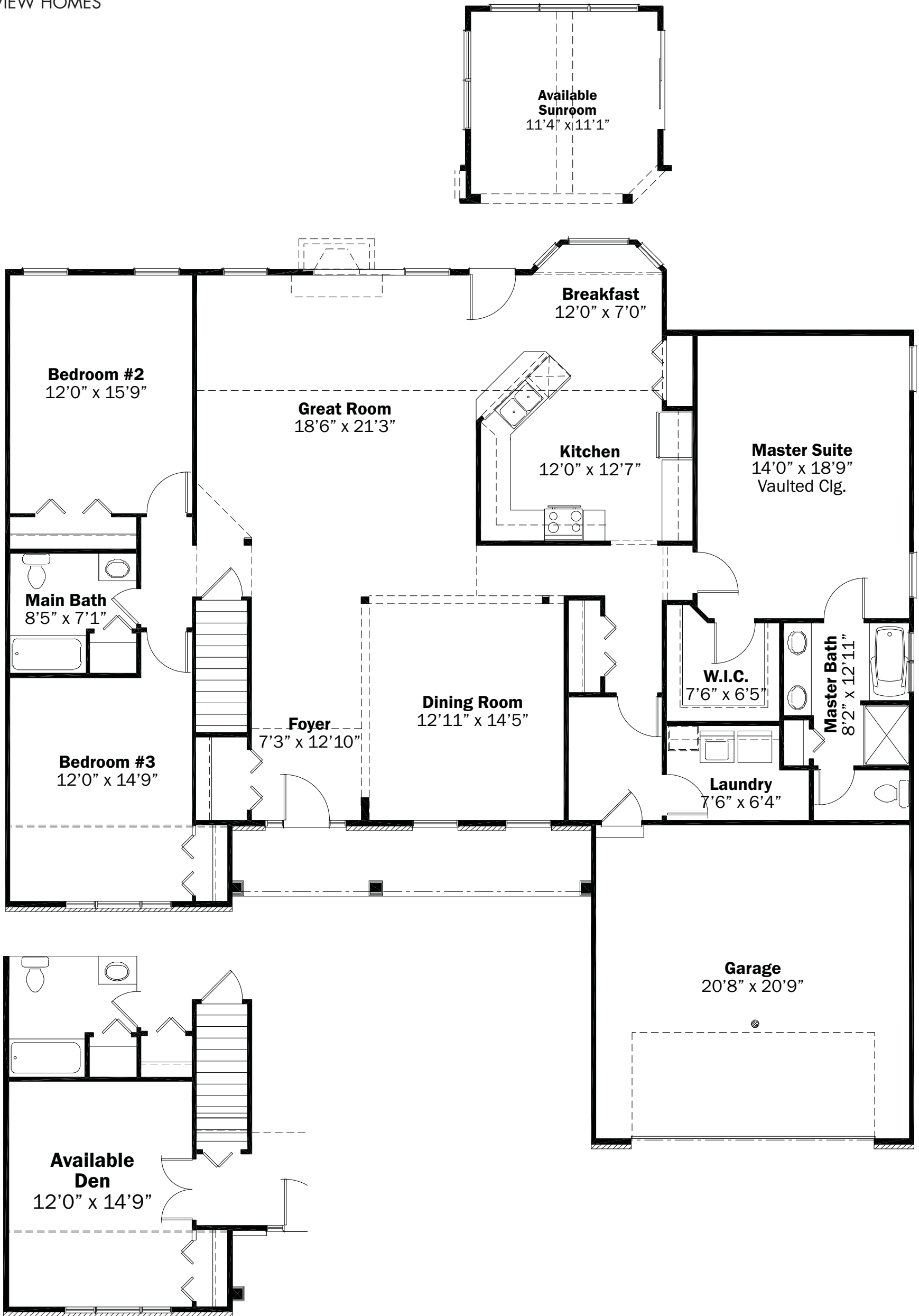
SQ. FT. 2,238

*Floor Plans and Square Footage Vary by Elevation*

## FIRST FLOOR PLAN

MONTCLAIR ELEVATION "A"  
PARKVIEW HOMES

## The Craftsman Series



"A Family Tradition For More Than 80 Years"

13370 Prospect Road • Strongsville, OH 44149 • (440) 238-9440 • [www.ParkviewHomes.com](http://www.ParkviewHomes.com)

Parkview Homes is committed to the constant improvement of our products. To insure that your new Parkview home is of the highest quality, we reserve the right to make product substitutions of equal or higher quality, and changes to brand names, dimensions and architectural details. This brochure is for illustrative purposes only and not part of a legal contract. Prices and specifications subject to change without notice. All square footage calculations are under roof. Copyright ©2014 Parkview Homes, All Rights Reserved. 8/10/14