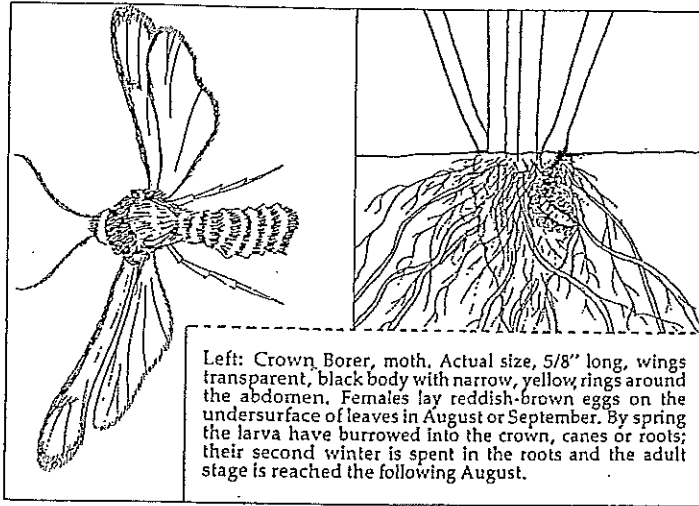


## Crown Borer

The crown borer is an insect pest throughout the Northwest. It burrows into the lower stems and crowns of the plant. Usually the damage is done during late winter and early spring. As the weather warms and the plant begins to grow, damaged and stressed canes begin dying. To control this pest, drench the crown with diazinon in late winter. Crown borers are particularly fond of red raspberries but also attack blackberries and their relatives.



Left: Crown Borer, moth. Actual size, 5/8" long, wings transparent, black body with narrow, yellow rings around the abdomen. Females lay reddish-brown eggs on the undersurface of leaves in August or September. By spring the larva have burrowed into the crown, canes or roots; their second winter is spent in the roots and the adult stage is reached the following August.

**III** Peaches. Vase. Peach trees set fruit on branches that grew the previous year. Remove about two thirds of new growth to keep crop from becoming overwhelming.

**III** Pears. Central leader. Prune to a pyramid shape. Do not prune too heavily as this will promote suckers.

**III** Plums (Japanese). Vase. Requires heavy pruning to avoid excessive fruit set. Head back one-third to one-half of new growth.

If you have any further questions, please contact  
253-863-5843.

Windmill Gardens