



## Laborers' Local 175 Builds New Whittier Bridge

(Above) Local 175 Business Manager Michael Gagliardi with several LIUNA Laborers



One of the nation's largest and most comprehensive bridge construction projects is currently underway in northern Massachusetts and nearly 100 Laborers are on the job utilizing their skills and expertise to get the job done.

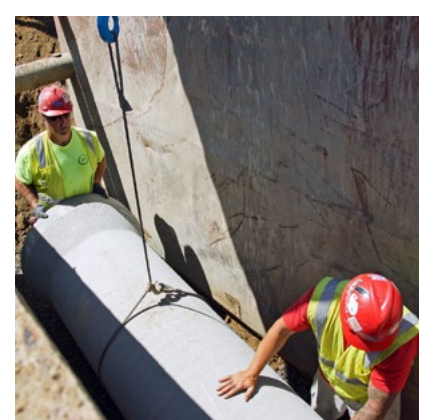
It is the Whittier Bridge project, which will replace the existing aging bridge with two new bridges, offering commuters four lanes on the northbound side and four lanes on the southbound side. This will not only improve the local infrastructure with brand new safer bridges, it offers economic advantages to the area as well. Working alongside signatory contractor Walsh-McCourt JV1, the majority of Laborers hail from Lawrence, Massachusetts Local 175, with other members representing various LIUNA locals from New York, all the way through New England up to Maine.

Construction on this multi-phase bridge project began in the summer of 2013, and the anticipated project completion is October, 2016. The bridge is a signature project of the Patrick Administration's Accelerated Bridge Program, and it carries I-95 across the Merrimack River between Newburyport and Amesbury. The project includes the first shared use path along a Massachusetts interstate with pedestrian overlooks across the Merrimack River, with its cost in the range of approximately \$292 million. Also the Whittier Bridge Project is one of five "mega projects" in President Obama's Accelerated Bridge Program (ABP). Other projects include the Fore River Bridge

Project in Quincy-Weymouth, Burns Bridge Project in Shrewsbury-Worcester, Longfellow Bridge Rehabilitation Project, and the Fall River/I-195 Improvement Project.

Laborers on the project are performing various job classifications which showcase their skills, training, and expertise. These include cutting and burning, site work, excavation, retaining wall work, traffic control, and various other classifications.

Local 175 Business Manager Michael Gagliardi stresses the importance of this project as he comments, "The Whittier Bridge project is a major example of General President O'Sullivan's and General Secretary-Treasurer Sabitoni's vision for creating jobs for Laborers through improved infrastructure and rebuilding bridges and roads throughout the U.S. and Canada. This project will not only be a boost for the local economy in Massachusetts and New Hampshire, it has a positive international impact as it uplifts the economic activity of both the United States and Canada since it serves the northeast corridor of the country and impacts millions of people who commute and work in this area. We are proud to be an integral part of this major project and to work alongside Walsh-McCourt on this endeavor."



The John Greenleaf Whittier Bridge was built in 1951 connecting Newburyport and Amesbury over the Merrimack River, and is a critical regional transportation link for people and commerce. It replaced the Route 1 drawbridge to relieve traffic congestion. It is important to note that the new bridge cross section will include four travel lanes, a high speed shoulder and a breakdown lane in each direction. Four adjacent bridges are being replaced or reconstructed along a 3.5 mile segment to accommodate a widened Interstate 95 (I-95) from Exit 57 in Newburyport to Exit 59 in Salisbury to provide capacity to meet projected 20-year traffic volumes. In addition to the bridge and highway improvements, a shared use path will facilitate area connections to regional trail systems. Stormwater collection from the bridge and roadway and pretreatment systems will protect water quality in the river and community water supplies.